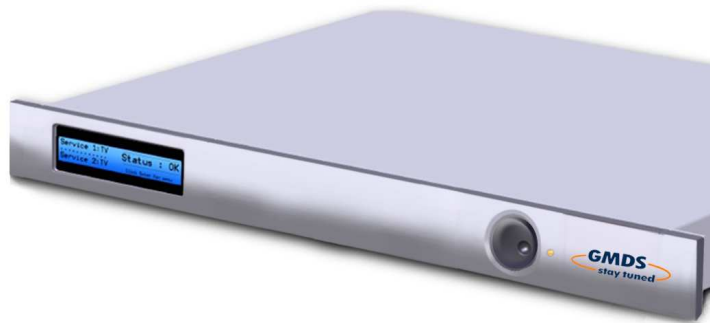


Miniature turn-around Head-End in 1RU for DVB- and IP- TV Solutions



Key Features

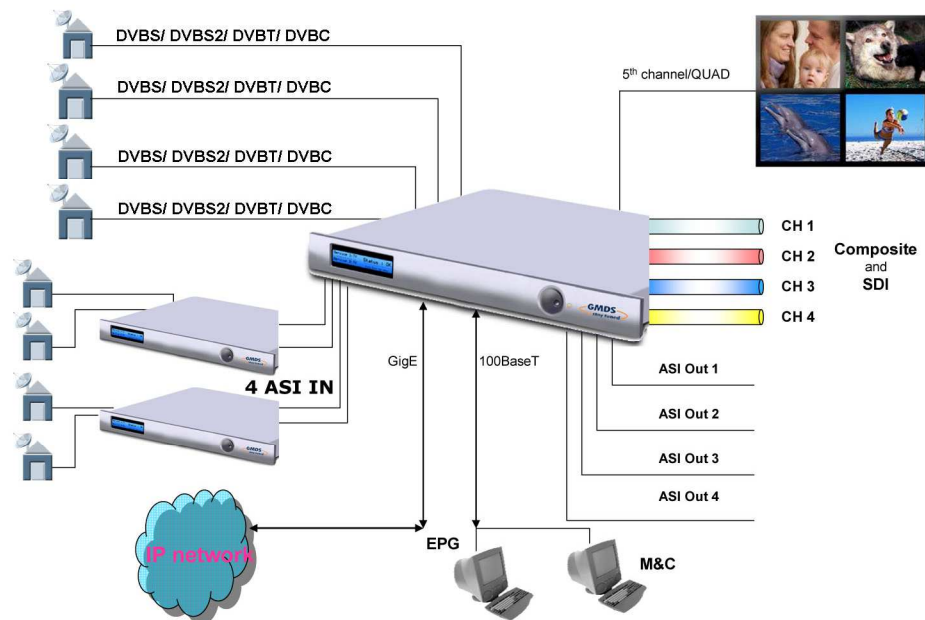
- Up to 4 input interfaces: DVB-S /S2 /C /T.
- Up to 4 DVB-CI slots: Descrambling of multiple streams.
- MCD – up to 12 services (24 PIDs) descrambled per CI slot.
- Streaming out via multiple ASI or IP outputs.
- Multiplexing - Provides multi video, audio, data, re-multiplexing of 8 inputs.
- Compact size: 1 RU
- Low power consumption.
- Redundancy: Dual Power supplies.

Application

Turn around applications include typically:

- Receiving block,
- Multiplexing block
- Decoding block
- Streaming block

The GMDS-IRD includes just enough capabilities from all the above, in order to fulfill the typical needs of cable head-ends & IPTV-Solutions, in a single 1 RU unit.



GMDS-IRD family provides:

- up to eight incoming Transport Streams
- up to four outgoing Transport Streams,
- up to 5 decoder outputs, depending on model,
- a mix of Front-Ends options (Cable, Terrestrial, IP),
- Four DVB-CI slots for decrypted services and
- decoding with Multi-Channel Decryption (MCD) of up to 12 Services per DVB-CI slot,
- Control and Monitoring over IP.

Business Benefits

- Grooming into four new variable ASI and IP outgoing streams
- Support for a wide variety of Conditional Access (CA) systems, DVB-CI and embedded: VideoGuard®, Conax®, Viaccess®, MediaGuard®, Cryptoworks®, NagraVision®, TongFung®, SECA®, ThalesCrypt Xcrypt®, Irdeto®
- Multi BISS-1, BISS-E decryption - up to 8 BISS services in four different TS
- Remote control via friendly GUI, RS232, SNMP, HTTP and via web browser
- Support of various data formats including LSD over RS-232 and HSD over 100BaseT

Decoder features

- MPEG4 Layer 4.2 signals – both SD and HD in 4:2:0
- DVB-MPEG2 signals – both SD and HD in 4:2:0
- MPEG4 AVC/H264 Part 10 signals – both SD and HD in 4:2:0
- SD-MPEG1,2,4 1.5-15Mbps MP@ML
- HD-MPEG2/4 up to 50Mbps
- HD Video Decoder supports: 720i/p / 1080i / HD up to 1920 x 1240 resolution
- All picture types are supported (I,P,B)
- 3:2 pull down is supported
- Supports PAL, PAL-M and SECAM/NTSC format is supported for SD.

Options

- Inputs: DVBS, DVBS2, QAM, COFDM
- Up to 4 ASI in, up to 216 Mbit/Sec
- Up to 4 variable bit-rate ASI out
- Up to 4 CI slots
- Close caption
- MCD (Multi Channel Decryption of four Full TS)
- Two RS-232 and two 100BaseT Ethernet for data and for monitoring
- Internal redundancy support
- Two GPI dry contacts
- IP output (100 Base T, or GbE)

Monitor & Control:

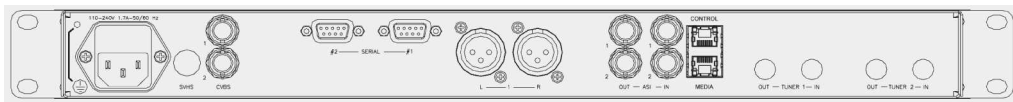
- SNMP interface & Web interface
- RS-232

Further information:

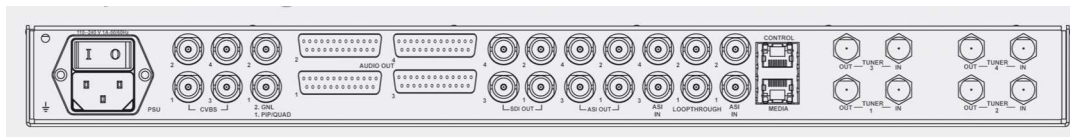
- Size HxWxD: 1RU - 19" x 16.5" (44x 486x 420mm)
- Weight: 3.5 kg.
- Voltage: 100V-240V AC, 50/60 Hz or 24-48 VDC supply
- Humidity: 5-95%
- Power consumption: 80W

		GMDS-IRD1	GMDS-IRD4	GMDS-IRD5
input	ASI input	2/2	4/4	2/4
	IP-in (100BaseT)	0/1	0/1	0/1
	max input DVBS	0/2	0/4	0/4
	max. input DVBS2	0/2	0/4	0/4
	max. input DVBT	0/2	0/4	0/4
	max. input DVBC	0/2	0/4	0/4
	Total input DVB	2	4	4
decoder	Decoder MPEG2	0/1	0/5	
	MPEG2/4 SD+HD			0/1
	PIP-Monitor output		0/1	
	MPEG2/ SD	X	X	X
	4:2:0	X	X	X
	4:2:2	X	X	
	MPEG2/4 SD+HD 4:2:0			X X
video output	composite	0/1	0/4	0/2
	SDI	0/1	0/4	0/2
	RGB-HD			0/2
	HDMI			0/1
	SVHS			0/1
	ASI	2/2	4/4	2/2
	Genlok		0/1	0/1
	HD to SD down conversion			0/1
audio output	First Analog Audio	0/1	0/8 two per Decoder	0/4
	Second Analog Audio	0/1		
	AES/EBU	0/1	0/8 two per Decoder	0/4
	SPDIF			0/1
dencryption	CAM	0/2	0/4	0/4
	BISS 1 Key	yes (opt.)	yes (opt.)	yes (opt.)
	BISS Multi key	yes (opt.)	yes (opt.)	yes (opt.)
	Multi Channel Descrambling	yes (opt.)	yes (opt.)	yes (opt.)
management/IP	management/IP	1	1	1
	IP Out Unicast Multicast	yes (opt.)	yes (opt.)	yes (opt.)
	GigE Unicast Multicast			yes (opt.)
	GigE for Streaming (SFP)			yes (opt.)
	HTTP	1	1	1
	SNMP	1	1	1
	RS232 Control	1	1	1
Multiplexing	Multiplexing for creation of new TS steams		yes (opt.)	
	Sync lock – locking of clock to external PCR from input TS		yes (opt.)	

GMDS-IRD1



GMDS-IRD4



GMDS-IRD5

